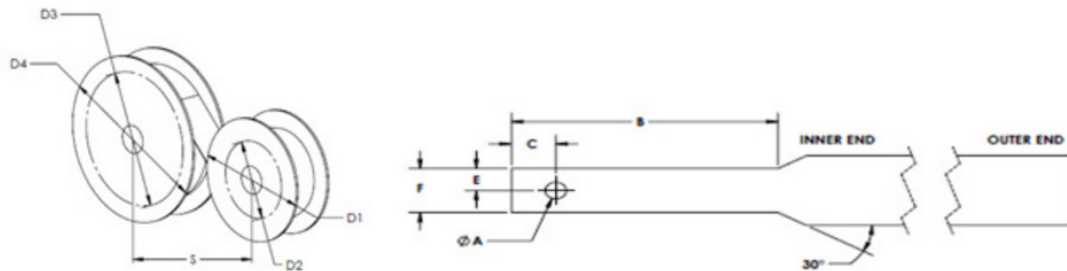




Standard Spring Design Guide

Constant Torque Springs

Fatigue Life 2,500 Cycles Minimum



Materials: 301 High Yield Stainless Steel.
Dimensions below are shown in inches.

Part #	Torque Lbs. ±10%	Recom'd Storage Drum. (D2)	Recom'd Output Drum. (D3)	Recom'd Storage Flg. Dia. (D1)	Recom'd Storage Flg. Dia. (D4)	S	Thick-ness (T)	Width (W)	Spring Length	No. of Turns	A	B	C	E	F
20002	0.13	0.32	0.56	0.51	0.69	0.69	0.002	0.250	44	20	0.093	0.750	0.125	0.078	0.156
20004	0.34	0.51	0.89	0.82	1.11	1.11	0.004	0.250	70	20	0.093	0.750	0.125	0.078	0.156
20005	0.65	0.64	1.12	1.02	1.38	1.38	0.005	0.312	87	20	0.120	1.260	0.187	0.105	0.21
20006	1.13	0.77	1.34	1.23	1.66	1.66	0.006	0.375	106	20	0.120	1.260	0.187	0.105	0.21
20007	1.81	0.90	1.57	1.45	1.94	1.95	0.007	0.437	124	20	0.120	1.260	0.187	0.105	0.21
20008	2.65	1.03	1.78	1.64	2.21	2.21	0.008	0.500	144	20	0.120	1.500	0.250	0.156	0.317
20009	3.87	1.16	2.01	1.86	2.48	2.48	0.009	0.562	159	20	0.172	1.500	0.250	0.156	0.317
20010	5.50	1.28	2.23	2.04	2.76	2.76	0.010	0.625	175	20	0.172	1.500	0.250	0.156	0.317
20011	7.06	1.41	2.46	2.27	3.04	3.04	0.011	0.687	195	20	0.172	1.500	0.250	0.156	0.317
20012	9.00	1.53	2.67	2.45	3.32	3.32	0.012	0.750	210	20	0.172	1.500	0.250	0.156	0.317